

An aerial photograph of a coastal town, likely in St. Johns County, Florida. The town is situated along a long, straight beach that stretches into the distance. The ocean is a deep blue, with white waves breaking onto the sandy shore. The sky is a clear, light blue. The town features a mix of residential and commercial buildings, with some larger structures and many smaller houses. The overall scene is peaceful and scenic.

ST. JOHNS COUNTY

STRATEGIC & COMPREHENSIVE PLANS

UPDATE

*Joint
Community Meetings*

February 20-22, 2024



1

YOUR GOVERNMENT *(2024-2029 Strategic Plan)*

- St. Johns County Government
- Local Government Planning
- The Strategic Plan

2

YOUR COUNTY *(SJC 2050 Comprehensive Plan)*

- The Plan Update
- Preliminary Survey Results
- Public Engagement Opportunities

3

YOUR VOICE

- Tonight's Activities
- Ongoing Input Opportunities

AGENDA



ST. JOHNS COUNTY GOVERNMENT

- Constitutional Officers
 - Five Board of County Commission Members
 - Clerk of Court
 - Property Appraiser
 - Sheriff
 - Tax Collector
 - Supervisor of Elections
- County Commission appoints County Administrator





ST. JOHNS COUNTY GOVERNMENT

Key Services

Emergency Management

Fire Rescue

Water/Sewer

Libraries

Beach Access & Preservation

Public Works/Roads & Bridges

Parks & Recreation

Health & Human Services

Planning & Zoning

Housing & Community
Development

Building Permits

Tourist & Cultural Development



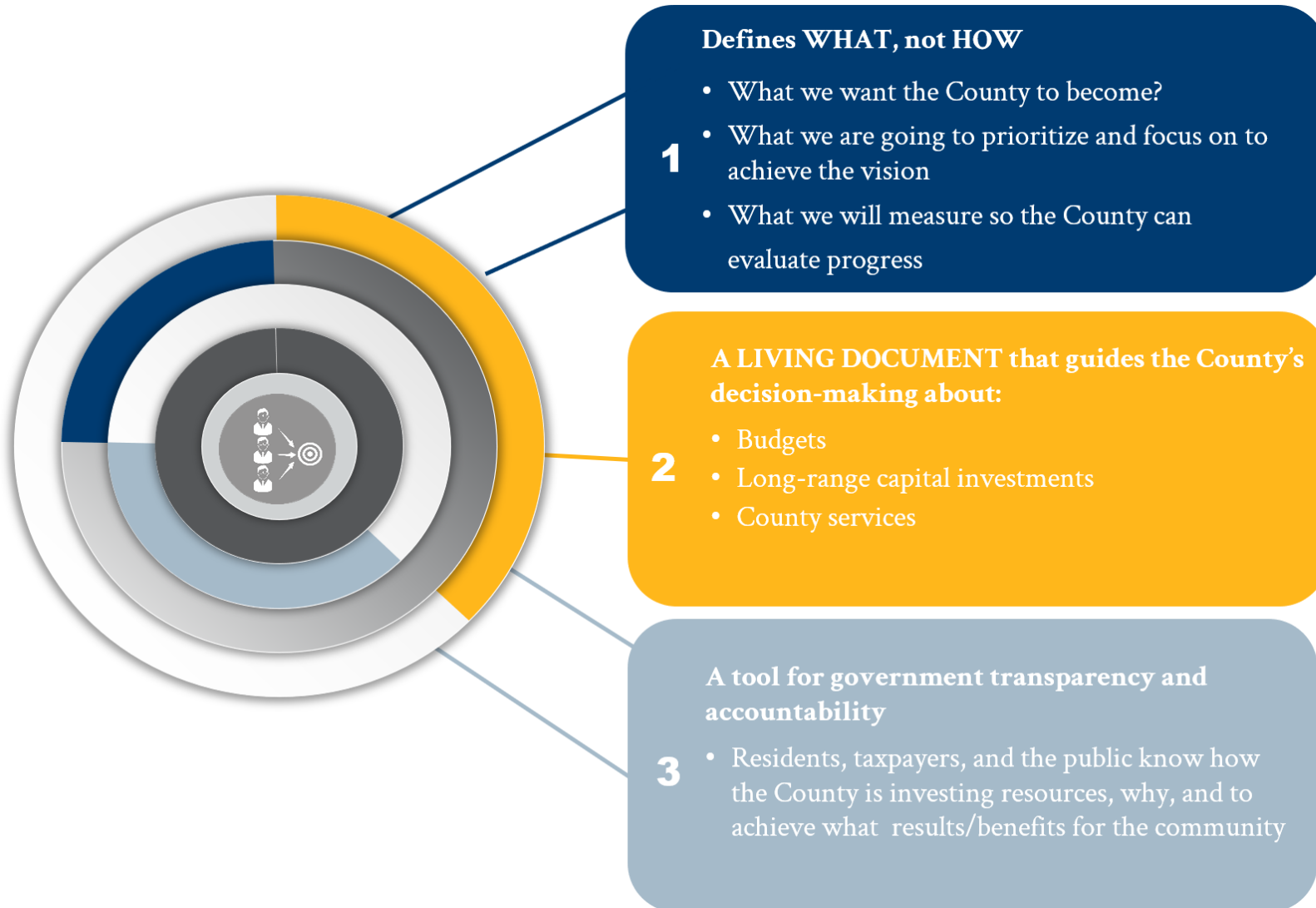
LOCAL GOVERNMENT PLANNING

Common Planning Efforts

planning type	 Strategic	 Comprehensive	 Economic development
purpose	Assesses where an enterprise- or department-wide organization is now, sets a vision for where it wants to go, and defines how it will get there	A document designed to guide the future actions of a jurisdiction. It presents a vision for a community's future with long range goals, objectives, and policies	Creates a vision and road map to proactively guide growth and development through actionable policies and strategies
focus(es)	Organizational direction Resource alignment Collective impact and stewardship in decision-making, policies, plans, programs, and policies	Land use and zoning Population growth Parks & Recreation Housing Transportation/Mobility Economic development Environmental stewardship	Population fluctuations Job creation and retention Market stability Partnership and investment Workforce attraction and retention
lifespan	3 – 5 years	10 – 20 years	3 – 5 years



WHAT IS A STRATEGIC PLAN?



The Strategic Plan defines **WHAT** the County will prioritize and focus on.

HOW the County carries out its strategy to reach the vision, priorities, and goals is defined in an **implementation plan**.

This implementation plan is developed by staff **AFTER** the Strategic Plan is complete.



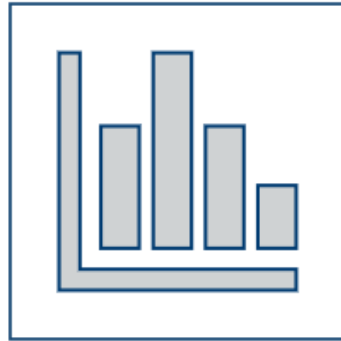
WHAT INFORMS THE STRATEGIC PLAN?



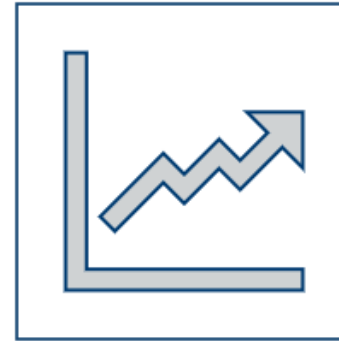
Interviews with
community
members



Social Pinpoint
Community
Engagement
Platform



Community survey
results



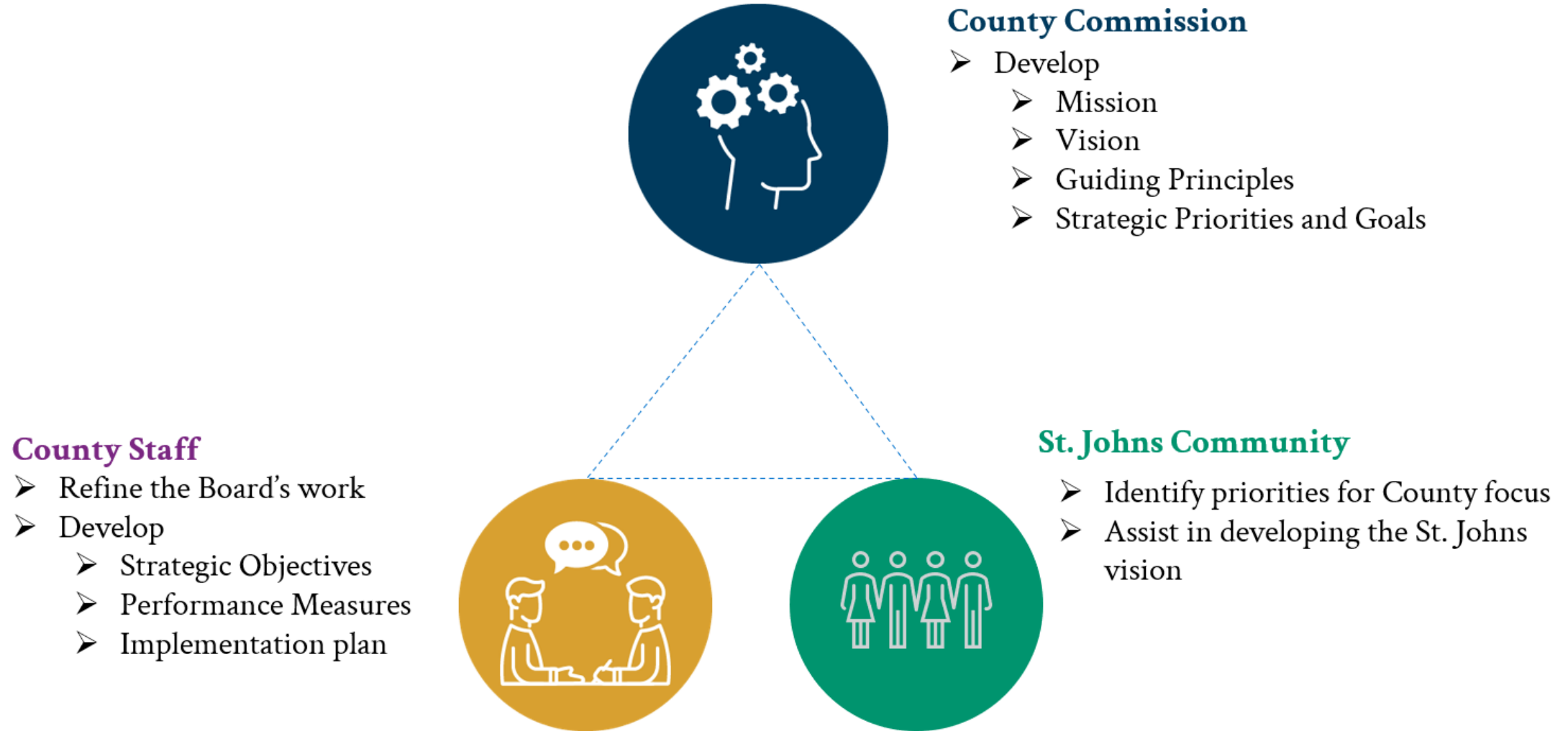
Demographic and
economic data



Current existing
County plans



HOW WE BUILD THE STRATEGIC PLAN





PROJECT SCHEDULE

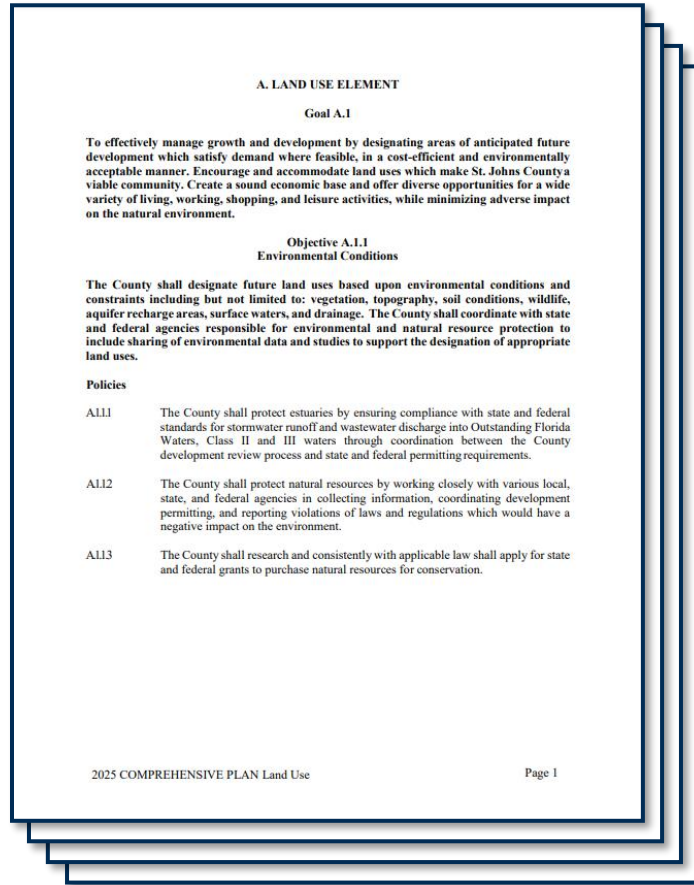




THE PLAN UPDATE

What is a Comprehensive Plan?

A document designed to guide the future actions of a jurisdiction. It presents a vision for a community's future with long range goals, objectives, and policies



The comprehensive plan also serves to:

- Help residents identify their vision for the future of the community
- Coordinate local decision making
- Provide guidance to landowners and developers



THE PLAN UPDATE

A. LAND USE ELEMENT

Goal A.1

To effectively manage growth and development by designating areas of anticipated future development which satisfy demand where feasible, in a cost-efficient and environmentally acceptable manner. Encourage and accommodate land uses which make St. Johns County a viable community. Create a sound economic base and offer diverse opportunities for a wide variety of living, working, shopping, and leisure activities, while minimizing adverse impact on the natural environment.

Objective A.1.1 Environmental Conditions

The County shall designate future land uses based upon environmental conditions and constraints including but not limited to: vegetation, topography, soil conditions, wildlife, aquifer recharge areas, surface waters, and drainage. The County shall coordinate with state and federal agencies responsible for environmental and natural resource protection to include sharing of environmental data and studies to support the designation of appropriate land uses.

Policies

- A1.11 The County shall protect estuaries by ensuring compliance with state and federal standards for stormwater runoff and wastewater discharge into Outstanding Florida Waters, Class II and III waters through coordination between the County development review process and state and federal permitting requirements.
- A1.12 The County shall protect natural resources by working closely with various local, state, and federal agencies in collecting information, coordinating development permitting, and reporting violations of laws and regulations which would have a negative impact on the environment.
- A1.13 The County shall research and consistently with applicable law shall apply for state and federal grants to purchase natural resources for conservation.

A

Land Use

B

Transportation

C

Housing

D

Infrastructure

E

Coastal /Conservation Management

F

Recreation Open Space

G

Intergovernmental Coordination

H

Capital Improvement

I

Property Rights

J

Economic Development



THE PLAN UPDATE

Why Update?

- *Allows for the community to update its vision for future growth*
- *Empowers the jurisdiction to plan, rather than react, to new development*
- *Provides an opportunity for the community to re-evaluate its current decision-making practices*
- *Allows for a reevaluation of service standards for public facilities and services*
- *Empowers the community to identify and address existing and projected opportunities*
- *Required by Florida Statutes*

A. LAND USE ELEMENT

Goal A.1

To effectively manage growth and development by designating areas of anticipated future development which satisfy demand where feasible, in a cost-efficient and environmentally acceptable manner. Encourage and accommodate land uses which make St. Johns County a viable community. Create a sound economic base and offer diverse opportunities for a wide variety of living, working, shopping, and leisure activities, while minimizing adverse impact on the natural environment.

Objective A.1.1 Environmental Conditions

The County shall designate future land uses based upon environmental conditions and constraints including but not limited to: vegetation, topography, soil conditions, wildlife, aquifer recharge areas, surface waters, and drainage. The County shall coordinate with state and federal agencies responsible for environmental and natural resource protection to include sharing of environmental data and studies to support the designation of appropriate land uses.

Policies

- | | |
|---------|--|
| A.1.1.1 | The County shall protect estuaries by ensuring compliance with state and federal standards for stormwater runoff and wastewater discharge into Outstanding Florida Waters, Class II and III waters through coordination between the County development review process and state and federal permitting requirements. |
| A.1.1.2 | The County shall protect natural resources by working closely with various local, state, and federal agencies in collecting information, coordinating development permitting, and reporting violations of laws and regulations which would have a negative impact on the environment. |
| A.1.1.3 | The County shall research and consistently with applicable law shall apply for state and federal grants to purchase natural resources for conservation. |



THE PLAN UPDATE

PHASE 1
(Winter 2024)

Data & Analysis

“Where are we now?”



PHASE 2
(Winter/Spring 2024)

Community Vision

“Where do we want to go?”



PHASE 3
(Summer 2024)

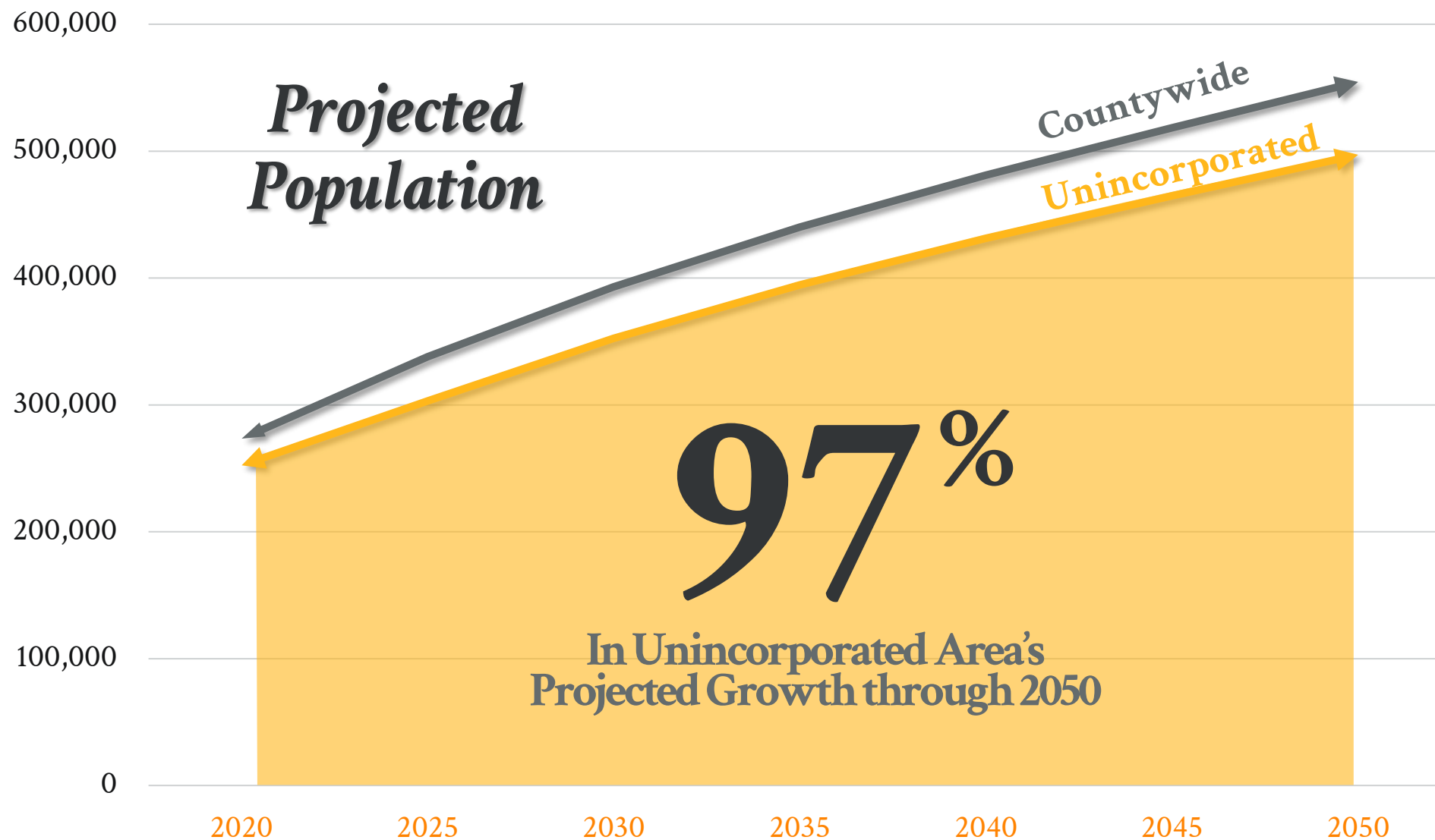
Goals, Objectives, & Policies

“How do we get there?”





THE PLAN UPDATE



Source: Bureau of Economic & Business Research at the University of Florida, April 2023.





PRELIMINARY SURVEY RESULTS

Which **initiatives** should be prioritized within the plan update?

Top 6 answers out of 24 total choices





PRELIMINARY SURVEY RESULTS

Infrastructure (roadways, utilities, etc.)

Traffic congestion

Housing affordability

Impact on the natural environment

Elimination of agricultural lands

Crime

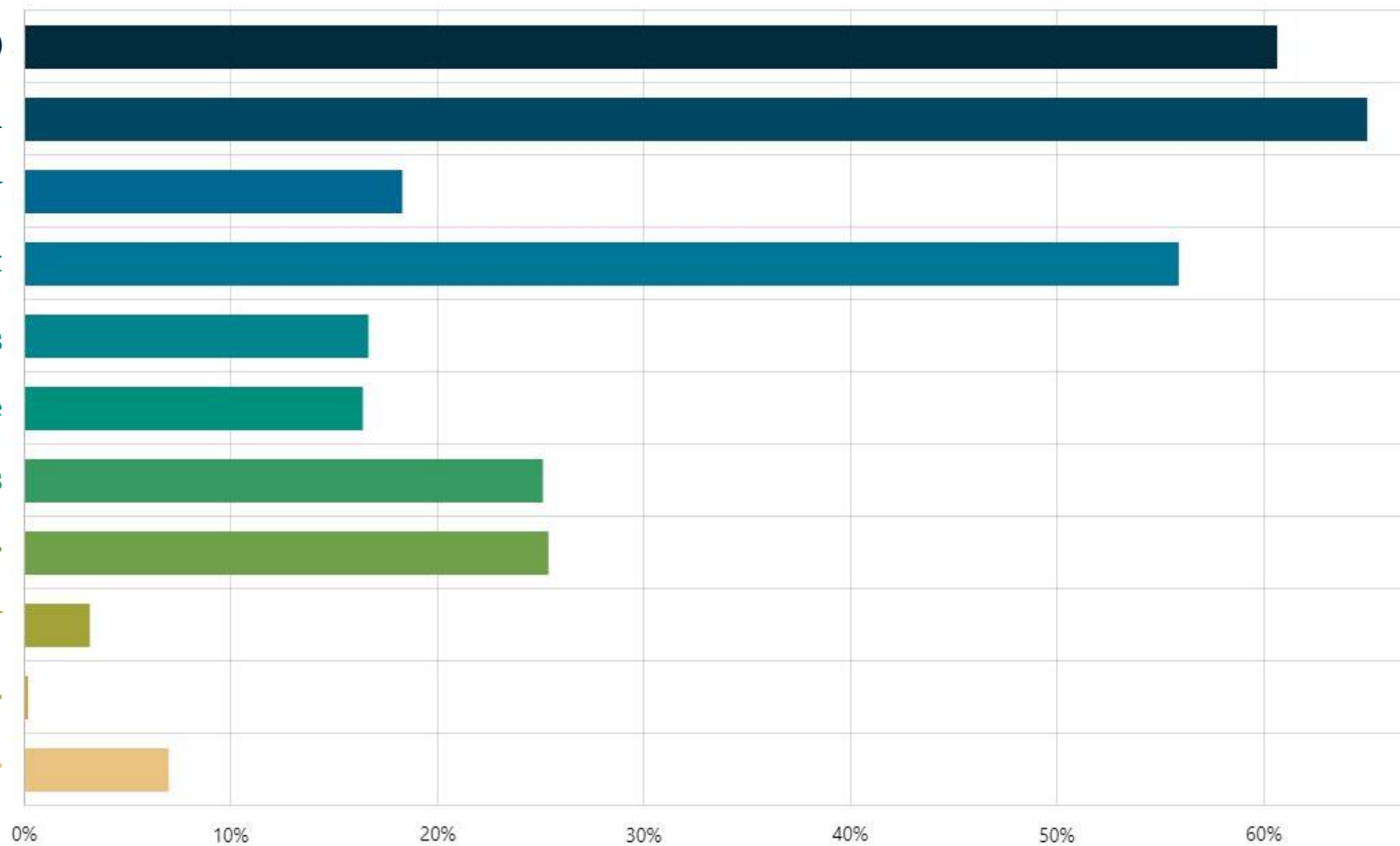
Overcrowded schools

Change in community character

Finding a new end user for WGV

I don't think these issues will occur

Other



What are the top **concerns** you have related to future growth within the County?





PUBLIC ENGAGEMENT SCHEDULE



PROJECT WEBSITE

Winter 2024 – Winter 2025

COMM. MEETINGS



Winter - Spring 2024

OPEN HOUSE #1



Early Summer 2024

OPEN HOUSE #2



Late Summer 2024

HEARINGS



Autumn 2024 – Winter 2025



TONIGHT'S ACTIVITIES

A

COMMUNITY VISION EXERCISE

B

COMMUNITY ASSESSMENT BOARDS

C

POPULATION GROWTH ACTIVITY

D

“WHAT’S YOUR VISION?” BANNER

E

IDEA WALL



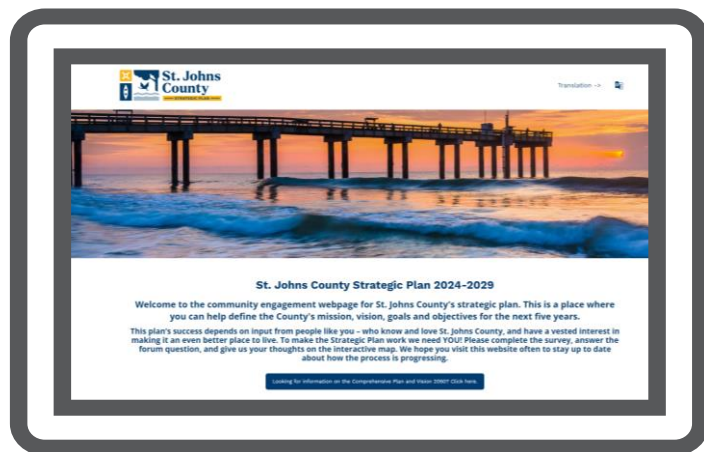
ONGOING INPUT OPPORTUNITIES



SCAN ME



#YourGovernment



sjcfl.us/sjc-strategic-plan



COMPREHENSIVE
PLAN UPDATE

#YourCounty



SCAN ME



SJCPlanUpdate.com

An aerial photograph of a coastal town with a sandy beach and blue ocean. The town is on the left, with houses and buildings. The beach is in the middle, and the ocean is on the right. The sky is blue with some light clouds.

THANK YOU!

*Joint
Community Meetings*
February 20-22, 2024